

BROKERAGE OFFERING/ INLAND PUSH BOAT VESSEL

**Name** *Ile de Grace* **Europe number** *01830952*

Casco Hull

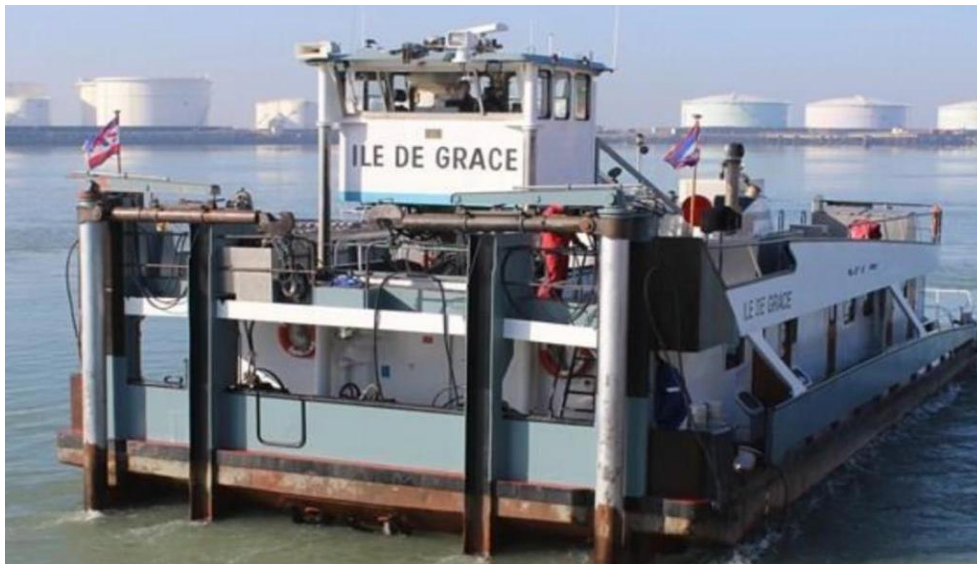
---

Dimensions 22,20 x 9,45 x 2.10 - 2.30m  
 Built 1967  
 Shipyard Chantier Fraco Belges Country France  
 Tonnage  
 M3

Machinery

---

Main engines(s)	2 x	Type Baudouin 12M	HP 630 / total 1260 HP
		Gearbox Masson	Info RSD 471
Bow-thruster(s)		None	
Generator(s)		Type no info	Kva Built
Pump(s)		Type no info	
Winche(s)		Type yes front/ hand	
Ruder(s)		Type no info	Propellor(s) 2x 1.70m



Seller is known with general conditions, the specification can be different then offered by seller.

Tel:+31 (0)183 642828 M: +31 (0)653 244870

E: [hs@hsbv.nl](mailto:hs@hsbv.nl) W: [www.hsbv.nl](http://www.hsbv.nl)

BROKERAGE OFFERING/ INLAND PUSH BOAT VESSEL

Deckhouse / wheelhouse

---

Wheelhouse information	Type movable	material steel	height no info
------------------------	--------------	----------------	----------------

Deckhouse aft	accommodation		
	Bedrooms 4	Mess room 1	
	Bathroom 1	Entrance	

General information

---

Nautical equipment

Maintenance of vessel	no info.
Certificates of vessel	Valid 2026 - Communautaire/ Zone 2 (D) not Rijn area
Bottom report	no info
Delivery terms	2024

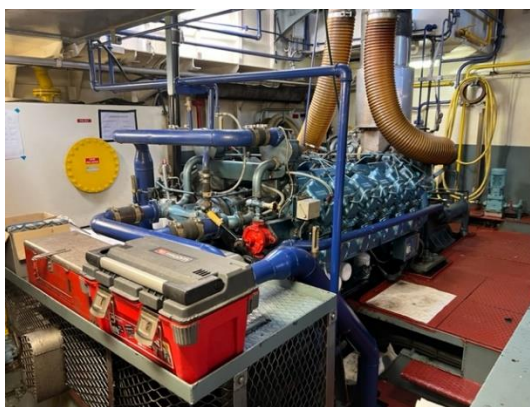
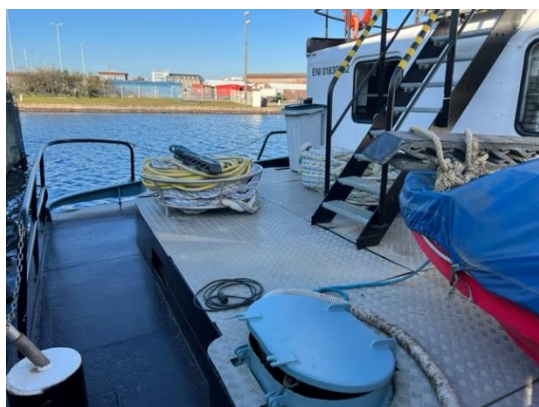
Price

---

**Price request € 550.000,-**

Conditions CIF F/ delivery time on request

Pictures:



Seller is known with general conditions, the specification can be different then offered by seller.

Tel:+31 (0)183 642828 M: +31 (0)653 244870

E: [hs@hsbv.nl](mailto:hs@hsbv.nl) W: [www.hsbv.nl](http://www.hsbv.nl)

BROKERAGE OFFERING/ INLAND PUSH BOAT VESSEL

