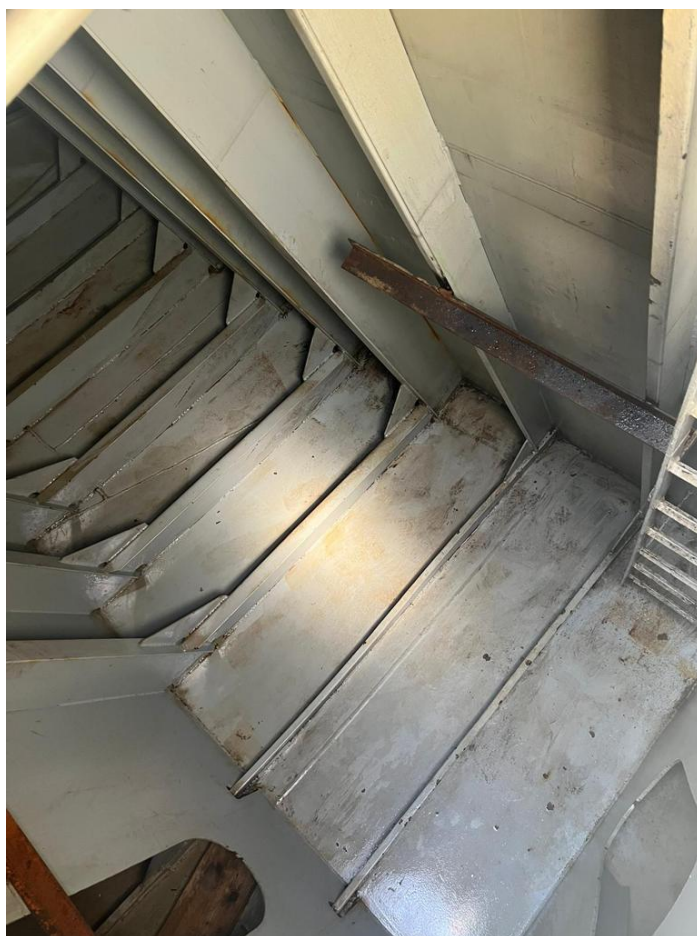


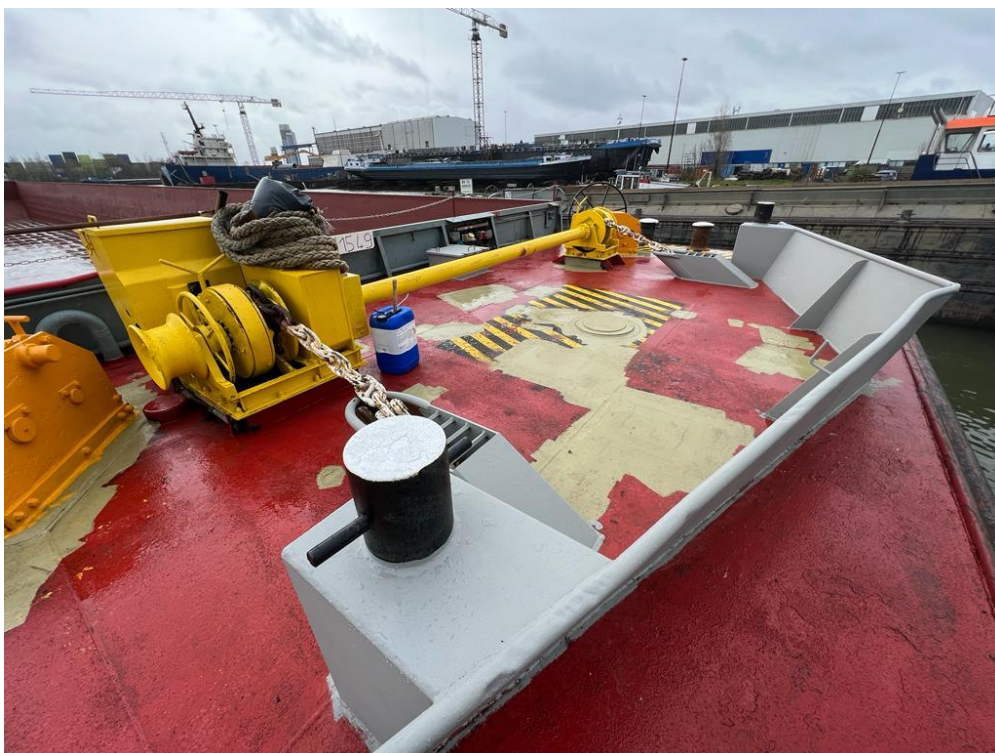
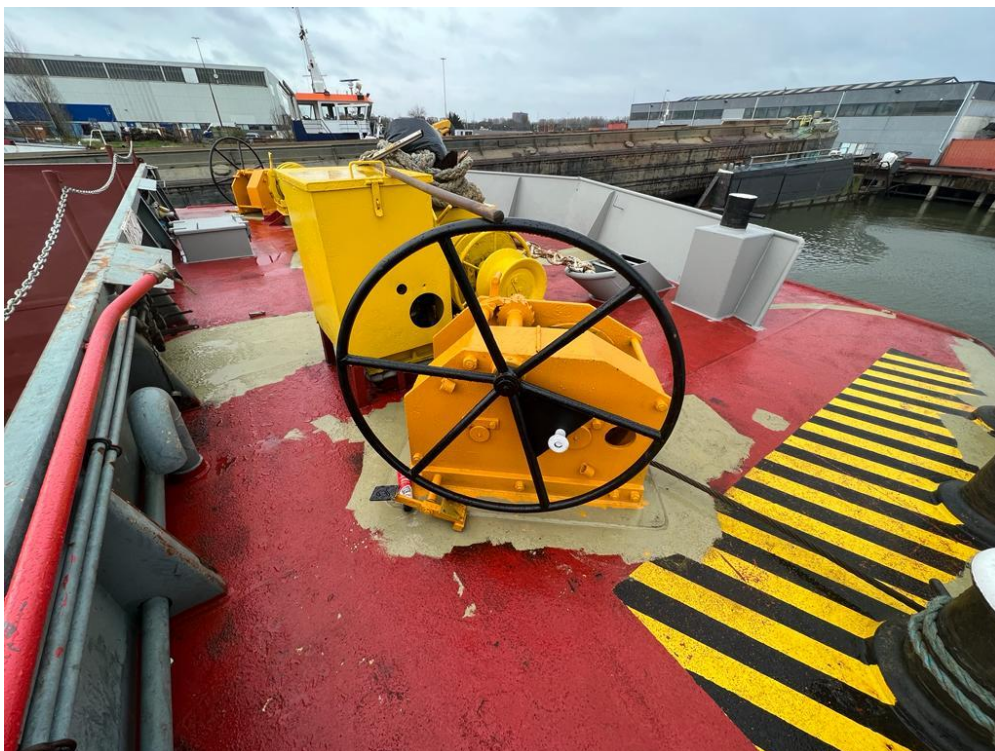
Name:	Alba Push barge EURO Type 2 V
Built:	1992
Shipyard:	Graville France
Tonnage:	2691
Cargo m3:	2800 /cargo Medium V shape
Dimensions:	79.00 x 11.40 x 3.50m
Cargo hold:	1
Hatches:	None
Denn hight:	1.10m
Floor:	Steel
Bow thruster:	Hydraulic ruder system on front removed.
Generators:	None
Winches:	Aft winch new, and front new couple winches 2 x from 2023.
Location:	Delivery NL / Export delivery possible to be arranged.
Extra info:	Certificates valid till 2027 barge is in very good state.
Price for 6 barges:	€ 560.000,- each/ <i>delivery including bollards 2 and two new couple winches. Also installed one aft winch(investment € 45.000,-). Cargo hold will be delivered clean.</i>



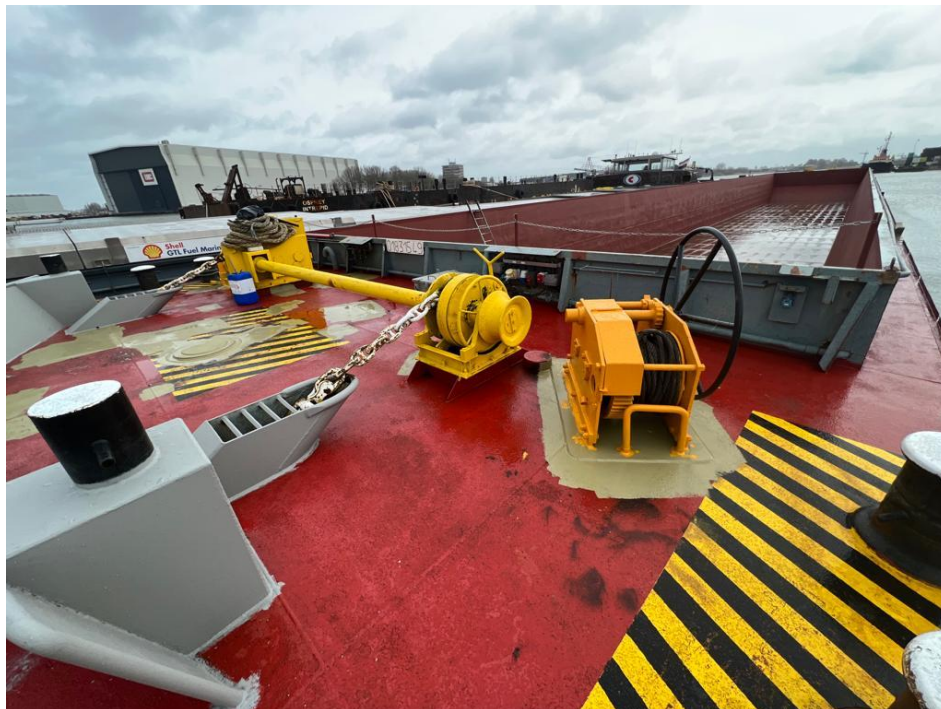




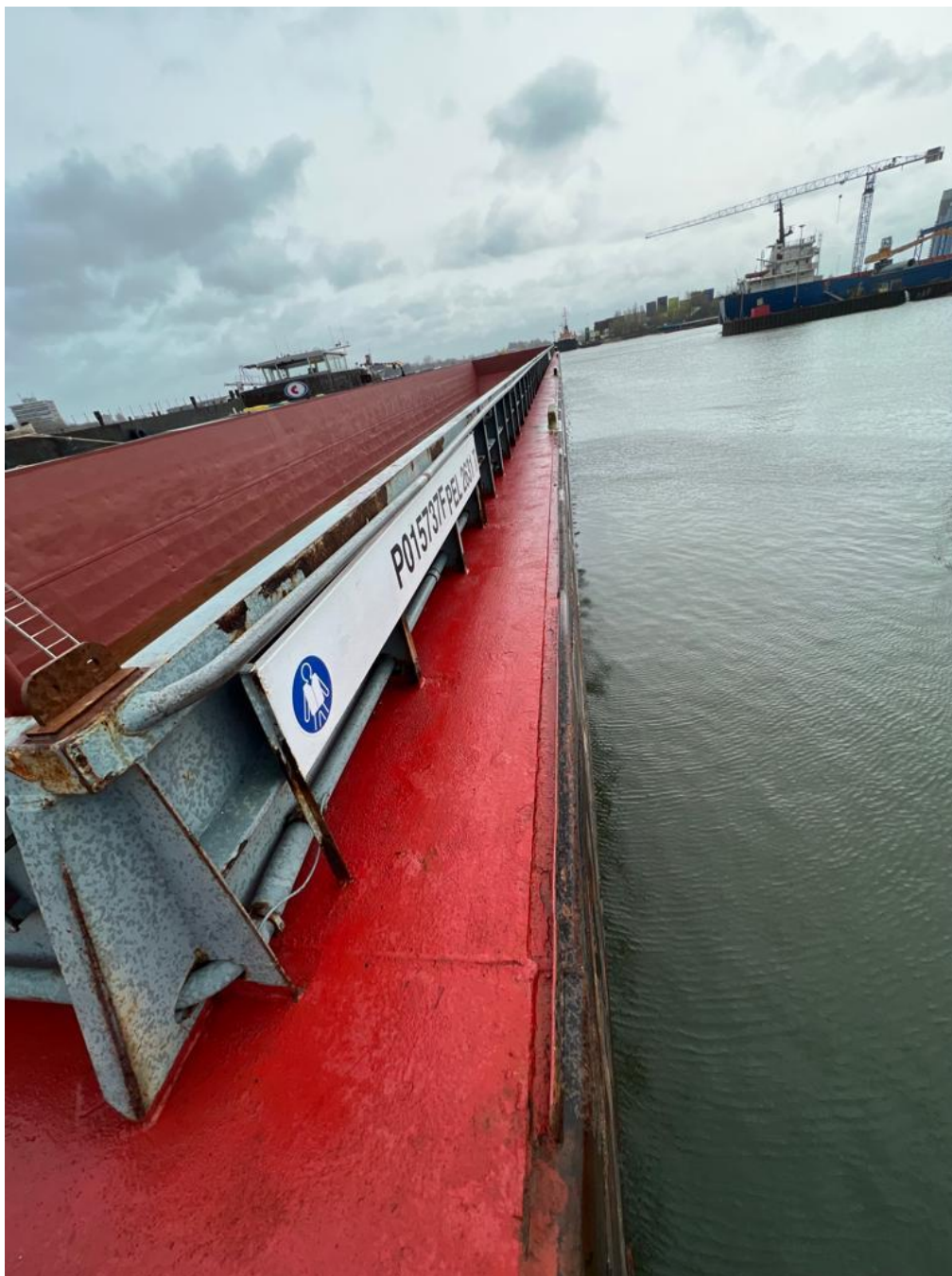




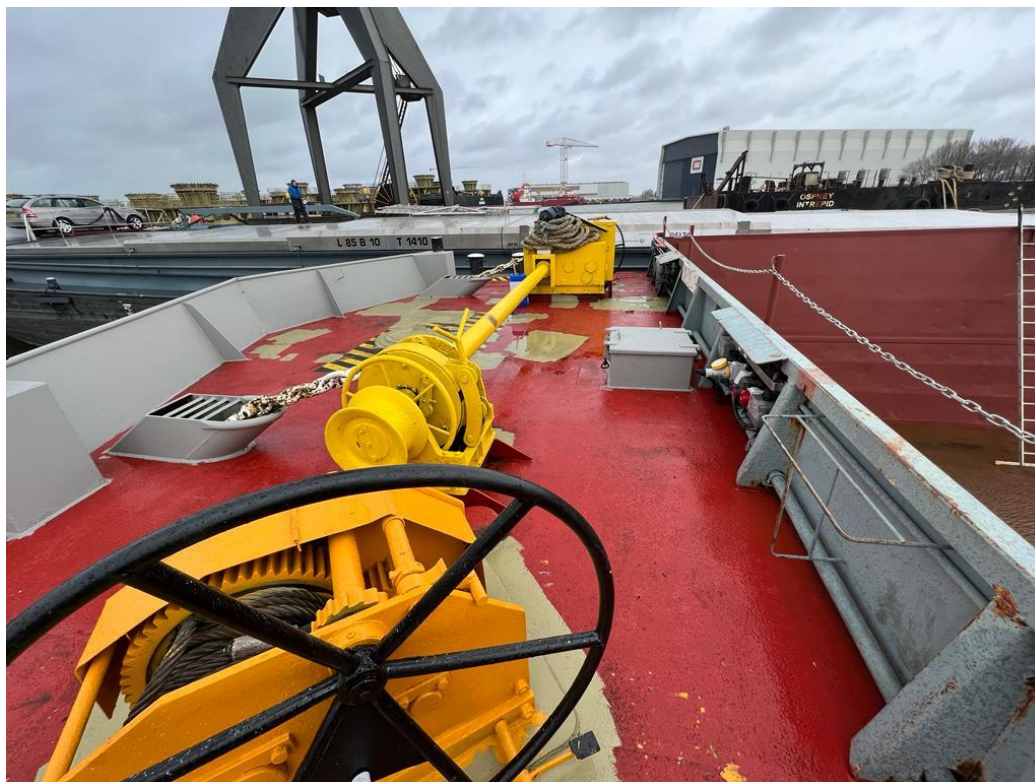
Painting works in progress



Cargo area fully painted sides

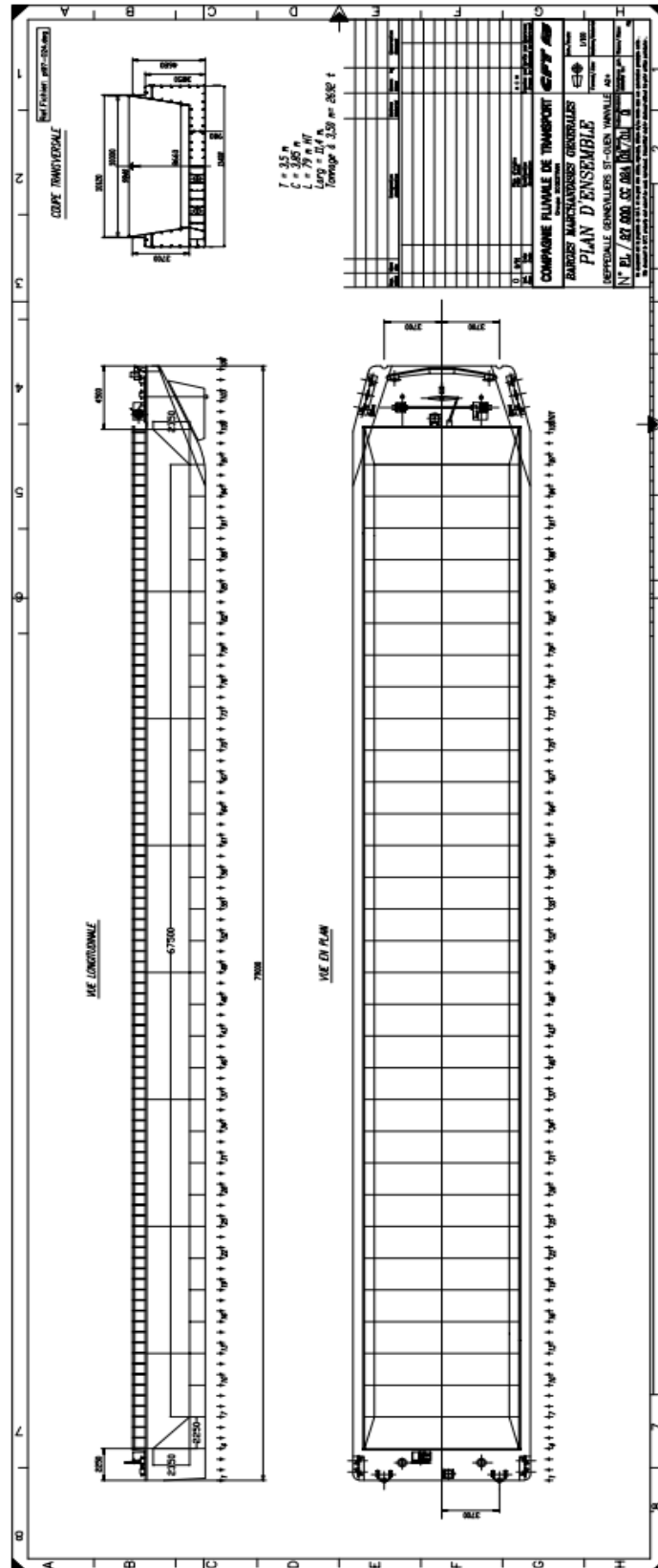


Seller is known with general conditions, the specification can be different then offered
Tel: +31 (0)183 642828 M: +31 (0)653 244870
E: hs@hsbv.nl W: www.hsbv.nl



New stairs made to enter cargo area

Seller is known with general conditions, the specification can be different then offered
Tel: +31 (0)183 642828 M: +31 (0)653 244870
E: hs@hsbv.nl W: www.hsbv.nl



Seller is known with general conditions, the specification can be different then offered
 Tel: +31 (0)183 642828 M: +31 (0)653 244870
 E: hs@hsbv.nl W: www.hsbv.nl