

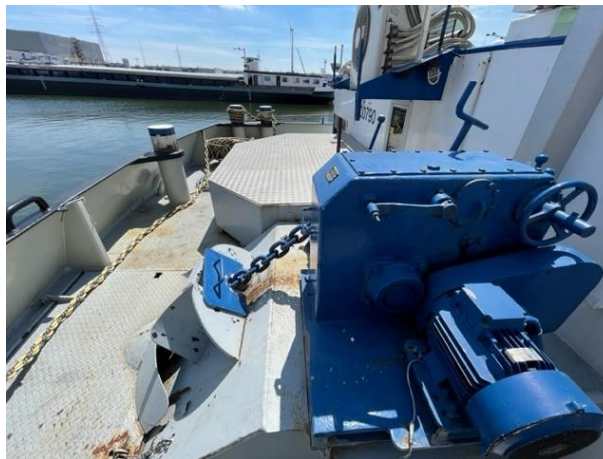
<b>Tanker Vessel</b>	<b>Spinel 04400790 (tanker) ex Lucy</b>
Tonnage	1400 tons 1450 m3
Build Dimensions	1972 Erlenbach Germany / new mid ship double walled 2000 85,90 x 9.50 x 2.86m
Class	New from 2022/Bureau veritas
Tanks	5 / plus 2 slob tanks internal Tank coating: Yes / plus heating coils / no kettle.
Pumps	2 x Borneman 400 m3/ piping double and tracing and strip pump for dry tanks.
Engine	Caterpillar type C32/ 1014 HP / 15.000 Hours running / new state Gearbox: Masson
Bow thruster	Verhaar Unit / 380 HP Engine
Generator	3/ Mitsubishi / Hatz/ John Deere / mwm/ plus one foreship John Deere
Deckhouse	Fore ship, living room, including kitchen, captains stay, bedroom bath and toilet. Aft ship, captains stay, open kitchen, bathroom double, extra mens stay, aircon, toilet. In very good state re fit 2015.
General Class	This vessel is in very good state optional and technical. From 2022 new / vessel is in good state and ready for delivery 3-2023.
Price	€ 950.000,- ex vat / delivery under approval owner and summer 2023.



Seller and Buyer are known with delivery terms, details can be different then offered.

Tel: +31 (0)183 642828 M: +31 (0)653 244870

E: [hs@hsbv.nl](mailto:hs@hsbv.nl) W: [www.hsbv.nl](http://www.hsbv.nl)



Seller and Buyer are known with delivery terms, details can be different then offered.  
Tel: +31 (0)183 642828 M: +31 (0)653 244870  
E: [hs@hsbv.nl](mailto:hs@hsbv.nl) W: [www.hsbv.nl](http://www.hsbv.nl)



Seller and Buyer are known with delivery terms, details can be different then offered.

Tel:+31 (0)183 642828 M: +31 (0)653 244870

E: [hs@hsbv.nl](mailto:hs@hsbv.nl) W: [www.hsbv.nl](http://www.hsbv.nl)





Seller and Buyer are known with delivery terms, details can be different then offered.

Tel: +31 (0)183 642828 M: +31 (0)653 244870

E: [hs@hsbv.nl](mailto:hs@hsbv.nl) W: [www.hsbv.nl](http://www.hsbv.nl)